

Content available at: <https://www.ipinnovative.com/open-access-journals>

Indian Journal of Obstetrics and Gynecology Research

Journal homepage: www.ijogr.org

Original Research Article

Role of TVS and MRI imaging in perimenopausal bleeding

Nirmala C Chudasama¹, Jaykumar D Goti^{1,*}, Kinjalben R Patel¹,
Bhagyesh V Prajapati¹¹Dept. of Radiology, C.U Shah Medical College and Hospital, Surendranagar, Gujarat, India

ARTICLE INFO

Article history:

Received 15-09-2022

Accepted 20-09-2022

Available online 08-11-2022

Keywords:

Abnormal uterine bleeding

Complex adnexal cysts

Endometrial carcinoma

ABSTRACT

Introduction: Abnormal uterine bleeding is any variation in the normal menstrual cycle, Includes: changes in frequency, duration and amount of blood loss during or in between the cycles. Approximately 70% of all gynecological consultations in perimenopausal and postmenopausal women are for abnormal uterine bleeding. There complaints may significantly affect the quality of life and lead to surgical intervention. TVS is an inexpensive, non-invasive, easily available and a convenient method to assess the uterine pathology. It is recommended as the 1st line diagnostic tool for assessing uterine pathology in perimenopausal age women presenting with abnormal uterine bleeding.

Aims and Objectives: To differentiate and characterize uterine and ovarian lesions based on MRI and TVS findings. To identify organ of origin of uterine and ovarian lesions based on MRI and TVS findings. To diagnose pathologies which have a difficulty in detection with TVS.

Materials and Methods: 40 patients in perimenopausal age group with complain of abnormal uterine bleeding were subjected to TVS and MRI examination. Final correlation with histopathology was done wherever it was acquired.

Results: Among 40 females, majority of them were in pre menopause period 25 (62.5%) and the rest in the post menopause period 15(37.5%). Among 40, majority were diagnose fibroids 14(37.5%), adnexal lesions 11(27.5%), carcinoma of cervix 5(12.5%), endometrial lesions 6(12.5%)and adenomyosis 4(10.0%). Adnexal lesions start in early age itself (35±2). Endometrial lesions(51±8) and carcinoma of cervix(55±6) were reported mostly in the post menopausal periods. Fibroids (40±5)and Adenomyosis(42±4) were reported in middle age. Among 11 patients TVS diagnosed 4 as Complex Adnexal Cysts, 3 as Dermoid, 2 as Simple ovarian Cyst, 1 as haemorrhagic Cyst and 1 as Possibly hydrosalphinx and MRI diagnosed 3 as Complex Adnexal Cysts, 3 as Dermoid, 2 as Simple ovarian cysts, 2 as haemorrhagic cyst and 1 as Hydrosalphinx.

Conclusions: MRI is found to be more accurate and precise in comparison to ultrasound to characterize, localize and evaluate the number of lesions both benign and malignant along with its staging in pelvic pathologies. While TVS lacks specificity and sensitivity in relation to MRI but acts as a great screening tool in evaluation and further management. MRI is accordingly a more precise preoperative imaging modality for portraying and distinguishing the distinct features of varied lesions.

This is an Open Access (OA) journal, and articles are distributed under the terms of the [Creative Commons Attribution-NonCommercial-ShareAlike 4.0 License](https://creativecommons.org/licenses/by-nc-sa/4.0/), which allows others to remix, tweak, and build upon the work non-commercially, as long as appropriate credit is given and the new creations are licensed under the identical terms.

For reprints contact: reprint@ipinnovative.com

1. Introduction

Abnormal uterine bleeding is any variation in the normal menstrual cycle, Includes: changes in frequency, duration and amount of blood loss during or in between the cycles.¹

* Corresponding author.

E-mail address: jaygoti0609@gmail.com (J. D. Goti).

Approximately 70% of all gynecological consultations in perimenopausal and postmenopausal women are for abnormal uterine bleeding. These complaints may significantly affect the quality of life and lead to surgical intervention.²

Abnormal perimenopausal or postmenopausal bleeding is associated with endometrial carcinoma in approximately 10% of cases and is considered to be caused by endometrial neoplasia until proven otherwise.^{3,4}

Approximately 90% of women with endometrial carcinoma present with vaginal bleeding.

In 18% to 40% of women, benign focal lesions, such as endometrial polyps and fibroids, are common. Although PMB is most commonly due to other conditions, it is essential to exclude endometrial carcinoma.⁵

TVS is an inexpensive, non-invasive, easily available and a convenient method to assess the uterine pathology.

It is recommended as the 1st line diagnostic tool for assessing uterine pathology in perimenopausal age women presenting with abnormal uterine bleeding.^{2,4}

Drawbacks include- limited field of view, obscuration of pelvis by bowel gas and its dependence on the skill expertise.⁶

In the pelvis, MRI appears to have a 91-93% overall precision for characterising benign and malignant lesions particularly when contrast techniques are used.^{5,7,8}

Magnetic resonance imaging because of its high resolution and multi planar imaging and its capability to characterize multiple lesions is becoming the modality of choice to assess the pathologies of pelvis.⁹

1.1. Classification of lesions¹⁰

1. Lesions of myometrium - Leiomyoma and adenomyosis.
2. Lesions of endometrium - Endometrial polyp, endometrial hyperplasia and endometrial carcinoma.
3. Lesions of cervix - Cervical carcinoma, cervicitis.
4. Adnexal lesions - Hydrosalpinx, hematosalpinx, pyosalpinx, simple ovarian cysts, hemorrhagic ovarian cyst, endometriotic cysts and dermoid cysts.

2. Aims and Objectives

1. To differentiate and characterize uterine and ovarian lesions based on MRI and TVS findings.
2. To identify organ of origin of uterine and ovarian lesions based on MRI and TVS findings.
3. To diagnose abnormalities which have a difficulty in detection with TVS.

3. Materials and Methods

3.1. Study design

Prospective case control study.

3.2. Sample size

40 patients in perimenopausal age group with complain of abnormal uterine bleeding attending OPD at C.U. Shah medical college and hospital.

1. All patients were subjected to TVS and MRI examination.
2. Final correlation with histopathology was done wherever it was acquired.
3. TVS was performed on Affinity Philips 70G transvaginal transducer.
4. Magnetic resonance imaging of pelvis was performed with 1.5T SIEMENS machine.
5. Clinical history was taken, TVS was done and the findings were noted.
6. Informed consent was taken from all patients & MRI was done using standard protocol.
7. All patients were followed up when it was possible.
8. Histopathology reports were collected when necessary from patients who underwent surgery or biopsy.

3.3. Exclusion criteria

1. Patients of low socioeconomic status who didn't agree to be a part of study.
2. Patients who had claustrophobia (afraid of closed spaces).
3. Patients inculcated with metallic bioimplants and grafts.
4. Unmarried women were not considered for TVS.

4. Result

Among 40 females, majority of them were in pre menopause period 25 (62.5%) and the rest in the post menopause period 15 (37.5%).

Table 1: Distribution of pre and post menopause study participants

	Frequency	Percent
Pre menopause	25	62.5
Post menopause	15	37.5
Total	40	100

Among 40, majority were diagnose fibroids 14 (37.5%), adnexal lesions 11 (27.5%), carcinoma of cervix 5 (12.5%), endometrial lesions 6(12.5%) and adenomyosis 4 (10.0%).

Table 2 describes that adnexal lesions start in early age itself (35±2). Endometrial lesions (51±8) and carcinoma of cervix (55±6) were reported mostly in the post menopausal periods. Fibroids (40±5) and Adenomyosis (42±4) were reported in middle age.

Table 3 describes that out of 4 cases TVS could detect only 2 as Adenomyosis and other 2 were? Adenomyosis.

This explains that there is significant difference in diagnosing adenomyosis using TVS and MRI.

Table 2: Distribution of cases

Number of Cases	Frequency	Percent
Fibroids	14	35.5
Adenomyosis	4	10.0
Carcinoma of cervix	5	12.5
Adnexal lesions	11	27.5
Endometrial lesions	6	15
Total	40	100

Table 3: Comparison of Mean age with final diagnosis

Final diagnosis	Mean Age
Fibroids	40±5
Adenomyosis	42±4
Carcinoma of cervix	55±6
Adnexal lesions	35±2
Endometrial lesions	51±8

Table 4: Comparison of TVS findings with MRI findings for Adenomyosis

TVS Diagnosis	MRI Diagnosis		Total
	Adenomyosis	Adenomyosis with fibroid uterus	
? Adenomyosis	2	0	2
? Adenomyosis with fibroid uterus	0	1	1
Adenomyosis	1	0	1
Total	3	1	4

Among 4 cases of adenomyosis MRI detect all (100%) where in TVS showed only 2 cases as positive.

1. Sensitivity = 50%
Positive predictive value = 100%
2. Positive likelihood ratio = 0.5
Accuracy = 50%
3. Sensitivity = 60%
Specificity = 33.3%
4. Positive predictive value (PPV) = 60%
Negative predictive value (NPV) = 33.3%
5. Positive likelihood ratio = 0.9
Negative likelihood ration = 1.2

Out of 8 cases TVS picked up 3 cases as positives were as HPE picked up all 5 cases of ca cervix. The true positives were 3 and true negatives were 1, there were 2 false negative and 2 false positives by the diagnosing test. There is no significant association detected.

1. Sensitivity 100%,
Specificity = 100%
2. PPV = 100%
Accuracy = 100%

Out of 8 samples MRI and HPE picked all 5 cases of ca cervix. The true positives were 5 and true negatives were 3.

Table 5: Comparison of Ca Cervix diagnosed by TVS with HPE

Ca Cervix TVS	HPE		Total
	Present	Absent	
Present	3	2	5
Absent	2	1	3
Total	5	3	8

Table 6: Comparison of Ca Cervix diagnosed by MRI with HPE

MRI	Ca Cervix HPE		Total
	Present	Absent	
Present	5	0	5
Absent	0	3	3
Total	5	3	8

There is significant association detected.

Out of 16 samples TVS picked up 6 cases as positive whereas HPE picked 6 cases of Endometrial Lesions. The true positives were 4 and true negatives were 8, there were 2 false positives and 2 false negatives by the diagnosing test.

1. Sensitivity = 66.6%
2. Specificity = 80%
3. Positive predictive value (PPV) = 66.6%
4. Negative predictive value (NPV) = 80%

Table 7: Comparison of endometrial lesions diagnosed by TVS with HPE

TVS	Endo Lesions HPE		Total
	Present	Absent	
Present	4	2	6
Absent	2	8	10
Total	6	10	16

Table 8: Comparison of endometrial lesions diagnosed by MRI with HPE

MRI	Endo Lesions HPE		Total
	Present	Absent	
Present	5	1	6
Absent	1	9	10
Total	6	10	16

Out of 16 samples MRI picked up 5 cases as positive whereas HPE picked 6 cases of endometrial lesions. The true positives were 5 and true negatives were 9, there were 1 false positive and 1 false negative by the diagnosing test.

1. Sensitivity = 83.3%
2. Specificity = 90%
3. Positive predictive Value (PPV) = 83.3%
4. Negative predictive value (NPV) = 90%

There is significant association between TVS and MRI.

Table 9: Comparison of number of Fibroid by TVS and MRI

TVS	MRI	
	Single	Multiple
Single	6	3
Multiple	NIL	5

1. Sensitivity =100%
2. Specificity = 62.5%
3. Positive predictive value (PPV) = 66.6%
4. Negative predictive value (NPV) =100%

Table 10: Comparison of frequency of diagnosis of adnexal lesions by TVS and MRI

TVS Diagnosis	Frequency	MRI Diagnosis	Frequency
Complex Adnexal Cysts	4	Complex Adnexal Cysts	3
Dermoid Simple Ovarian Cysts	3	Dermoid Cysts	3
Haemorrhagic Cyst	2	Haemorrhagic Cyst	2
Possibly Hydrosalpinx	1	Hydrosalpinx	1

There is significant association between TVS and MRI.

1. Sensitivity =100%
Specificity = 62.5%
2. Positive predictive value (PPV) = 66.6%
Negative predictive value (NPV) =100%

Among 11 patients TVS diagnosed 4 as complex adnexal cysts, 3 as dermoid, 2 as simple ovarian Cyst, 1 as haemorrhagic cyst and 1 as possibly hydrosalpinx and MRI diagnosed 3 as complex adnexal cysts, 3 as dermoid, 2 as simple ovarian cysts, 2 as haemorrhagic cyst and 1 as hydrosalpinx.



Fig. 1: T2 sagittal section of MRI pelvis shows hyperintense areas within the thickened junctional zone representing cystic changes of Adenomyosis



Fig. 2: TVS image shows bulky uterus with loss of endometrial-myometrial differentiation



Fig. 3: T2 sagittal section of MRI pelvis shows cystic lesion without internal septations in adnexa

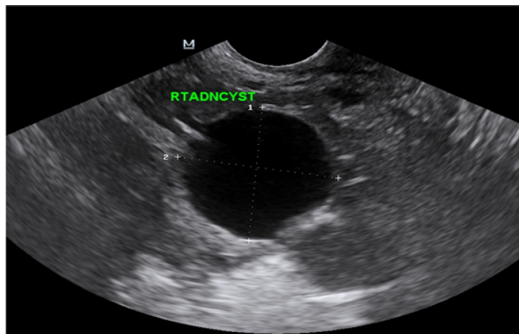


Fig. 4: TVS image shows simple cyst in adnexa



Fig. 5: T2 sagittal section of MRI shows ovoid hypointense polyp in the endometrial cavity

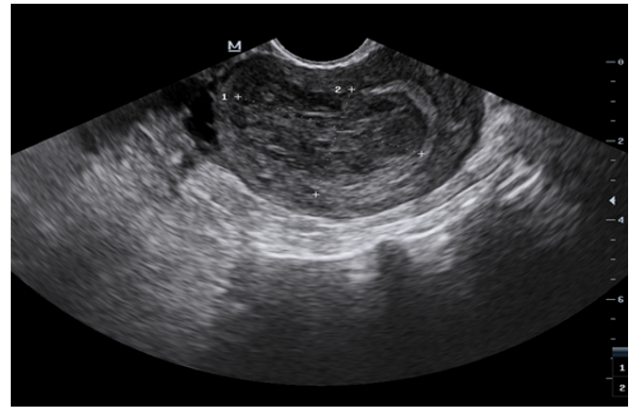


Fig. 6: TVS image shows thickened endometrium

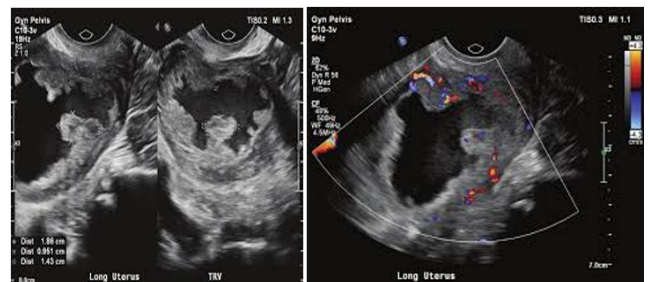


Fig. 7: TVS image shows endometrial carcinoma



Fig. 8: MRI image shows endometrial carcinoma

5. Conclusions

Abnormal uterine bleeding is a common symptom in perimenopausal women. Accurate diagnosis is essential to rule out benign or malignant conditions and provide the most appropriate treatment.^{2,4}

To characterize, localize and evaluate the number of lesions both benign and malignant along with its staging in pelvic pathologies, MRI is found to be more precise and many a times gold standard in comparison to ultrasound.^{6,11}

In cases of adenomyosis, MRI turned out to be more accurate in its diagnosis where as ultrasound was found indeterminate in visualizing the junctional zone.^{12,13}

In cases of fibroids in aiding their number and location, MRI turned out to be more superior than transabdominal and transvaginal ultrasound. In endometrial lesions, TVS can be used as a great screening tool. MRI was found to be crucial in determining myometrial invasion.¹⁴

Extent of carcinoma cervix and its invasion to adjacent viscera was found to be superior in MRI compared to ultrasound.

In the adnexa lesions, characterization and differentiation of various types of lesions, TVS was less specific in contrast to MRI.

Finally, we conclude that TVS lacks specificity and sensitivity in relation to MRI but acts as a better screening tool in evaluation and further management as it is cost effective, easily available and less time consuming. MRI is accordingly a more precise preoperative imaging modality for portraying and distinguishing the distinct features of varied lesions.

6. Source of Funding

None.

7. Conflict of Interest

None.

References

- Saini A, Dina R, Mcindoe GA, Soutter WP, Gishen P, deSouza NM. Characterization of adnexal masses with MRI. *AJR Am J Roentgenol*. 2005;184(3):1004–9.
- Schwartz LB, Panageas E, Lange R. Female pelvis: Impact of MR imaging on treatment decisions and net cost analysis. *Radiology*. 1994;192(1):55–60.
- ACR practice guideline for the performance of pelvic ultrasound in females. Reston, VA: American College of Radiology; 2006.
- Padubidri VG, Daftary S. Shaw's Textbook of Gynecology. 16th ed. Netherlands: Elsevier; 2014.
- Bailey CL, Ueland FR, Land GL, DePriest PD, Gallion HH, Kryscio RJ, et al. The malignant potential of cystic ovarian tumors in women over 50 years of age. *Gynecol Oncol*. 1998;69(1):3–7.
- Kochiyil J, Jeevan V. Utility of MRI in uterine and adnexal lesions. *Int J Med Res*. 2016;4(4):655–63.
- Murase E, Siegelman ES, Outwater EK, Perez-Jaffe LA, Tureck RW. Uterine leiomyomas: histopathologic features, MR imaging findings, differential diagnosis, and treatment. *Radiographics*. 1999;19(5):1179–97.
- Smorgick N, Maymon R. Assessment of adnexal masses using ultrasound: a practical review. *Int J Womens Health*. 2014;6:857–63.
- Bazot M, Cortez A, Darai E, Rouger J, Chopier J, Antoine JM, et al. Ultrasonography compared with magnetic resonance imaging for the diagnosis of adenomyosis: correlation with histopathology. *Hum Reprod*. 2001;16(11):2427–33.
- Devimeenal J, Arun DS. Comparison of the diagnostic accuracy of magnetic resonance imaging (MRI), transabdominal ultrasound (TAS), transvaginal ultrasound (TVS) in characterizing the uterine mass lesions. *J Dent Med Sci*. 2017;16(2):65–74.
- Levens ED, Wesley R, Premkumar A, Blocker W, Nieman LK. Magnetic resonance imaging and transvaginal ultrasound for determining fibroid burden: implications for research and clinical care. *Am J Obstet Gynecol*. 2009;200(5):537.
- Adusumilli S, Hussain HK, Caoili EM, Weadock WJ, Murray JP, Johnson TD, et al. MRI of sonographically indeterminate adnexal masses. *Am J Roentgenol*. 2006;187(3):732–40.
- Haggerty AF, Hagemann AR, Chu C, Siegelman ES, Rubin SC. Correlation of pelvic magnetic resonance imaging diagnosis with pathology for indeterminate adnexal masses. *Int J Gynecol Cancer*. 2014;24(7):1215–21.
- Scoutt LM, Mccarthy SM, Lange R, Bourque A, Schwartz PE. MR evaluation of clinically suspected adnexal masses. *J Comput Assist Tomogr*. 1994;18(4):609–18.

Author biography

Nirmala C Chudasama, HOD

Jaykumar D Goti, Resident Doctor

Kinjalben R Patel, Resident Doctor

Bhagyes V Prajapati, Resident Doctor

Cite this article: Chudasama NC, Goti JD, Patel KR, Prajapati BV. Role of TVS and MRI imaging in perimenopausal bleeding. *Indian J Obstet Gynecol Res* 2022;9(4):522-527.