

## Endometrial stromal sarcoma- A case report

Geetha<sup>1</sup>, Rathika. R<sup>2\*</sup>

<sup>1</sup>Associate Professor, <sup>2</sup>Junior Resident, <sup>1,2</sup>Dept. of Obstetrics Gynaecology, <sup>1,2</sup>Vinayaka Mission's Medical College and Hospital, Karaikal, Pondicherry, India

Correspondence Author: Rathika. R

Email: rathikar.rajesh@yahoo.com

Received: 4<sup>th</sup> March, 2019

Accepted: 22<sup>ed</sup> March, 2019

### Abstract

Endometrial stromal sarcomas are rare malignant tumours of the uterus. Most details about this tumour is obtained from previous case reports. In most of the cases, diagnosis is made only postoperatively. A 29 year old female, came with complaints of heavy menstrual bleeding, lower abdominal pain, mass in lower abdomen for 2 months. Clinical examination and investigations showed bulky irregularly enlarged uterus probably Fibroid Uterus. Patient was planned for Myomectomy. Intraoperatively, uterus was irregularly enlarged with cauliflower like growth of size 7 x 5 cm over fundus suggestive of Carcinoma. Total abdominal hysterectomy with bilateral salphingo oophorectomy with bilateral pelvic lymphnode dissection with infracolic omentectomy was done. Histopathology examination revealed as Low Grade Endometrial Stromal Sarcoma with Negative Lymph Node Spread. Postoperatively, Patient was evaluated for ER sensitivity and started on Tab. Anastrozole.

**Keywords:** Uterine sarcoma, Endometrial stromal sarcoma, Malignant uterine tumour

### Introduction

Endometrial stromal sarcomas constitute around 0.2% of all uterine malignancies. They constitute second most common mesenchymal uterine tumours. It usually involves age group of 40-58 years and most women are premenopausal. World health organisation classifies ESS into 1) Endometrial Stromal Nodule 2) Low Grade ESS 3) High Grade ESS 4) Undifferentiated ESS. It usually presents late with local metastasis. Distant metastasis can occur even 20 years after initial diagnosis. Surgery and hormonal therapy are mainstay of treatment. Prognosis is good in case of early diagnosis.

### Case Report

A 29 year old female was admitted in Department of Obstetrics and Gynaecology, Vinayaka Missions Medical College and Hospital, Karaikal, Pondicherry with complaints of heavy menstrual bleeding, lower abdominal pain, mass in lower abdomen for 2 months. Clinical examination revealed uterus enlarged upto 14-16 weeks size, firm, mobile from side to side, irregular margins with irregular surface. Ultrasonogram of abdomen showed uterus of size 10.3\*8.0\*7.8 cm, intramural fibroid of size 6.7\*6 cm in anterior wall. Patient was planned for Myomectomy. Intraop findings-uterus irregularly enlarged, cauliflower like growth of size 7 x 5 cm seen over fundus, edematous right fallopian tube. Bilateral ovaries were cystic and unhealthy. On suspicion of malignancy, Total Abdominal Hysterectomy with Bilateral Salphingo Oophorectomy with Bilateral Pelvic Lymphnode Dissection with Infracolic Omentectomy was done. Histopathology examination report came as Low Grade Endometrial Stromal Sarcoma with Negative Tumour Deposit. Patient underwent Immunohistochemistry studies and found to be ER positive. Patient was started on Tab. Anastrozole 1 mg OD. Patient is in regular follow up.

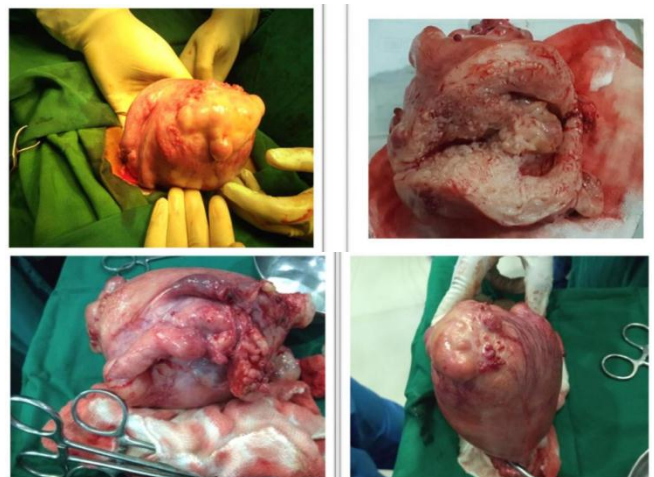


Fig. 1: Endometrial Stromal Sarcoma

### Discussion

Endometrial stromal sarcoma (ESS) is second most common Malignant Pure Mesenchymal Uterine Tumor (MPMUT) constituting about 0.2% of all uterine tumours.<sup>1</sup> It arises from submesothelial pluripotent müllerian cells.<sup>2</sup> ESS is classified into i) Endometrial Stromal Nodule (ESN) ii) Low Grade ESS (LGESS) iii) High Grade ESS iv) Undifferentiated ESS (UES).<sup>3</sup> Cytogenetic Abnormality of ESS is recurrent translocation t (7;17)(p15;q21).<sup>4</sup> Low grade tumours are indolent tumours with favorable prognosis.<sup>5</sup> LGESS occurs in age group of 28-67 years and presents as uterine enlargement, pelvic mass, abnormal uterine bleeding.<sup>6</sup> High grade tumours have features intermediate between LGESS and UES.<sup>7</sup> Microscopically, HGESS have round cells with spindle cell fibromyxoid component.<sup>6</sup> Undifferentiated ESS usually present as postmenopausal bleeding. UES are highly aggressive and carry poor prognosis.<sup>8</sup> ESS is common in extrauterine sites also. Among them, ovary is first involved usually 76%, extraovarian sites constitute 24%.<sup>9</sup> Histology of extrauterine extraovarian ESS show multinodular growth

patterns.<sup>10</sup> Imaging studies of ESS are usually nonspecific.<sup>11</sup> Positive labelling for CD10, PR, ER with negativity for CD117,CD34 is confirmative diagnosis.<sup>12</sup> Mainstay of treatment is total abdominal hysterectomy with bilateral salphingo oophorectomy. In case of pregnancy associated with sarcomas, laparoscopy can be done safely.<sup>13</sup> Abdominal surgery can also be done safely in case of pregnancy associated ESS.<sup>14</sup> In case of inoperable, recurrent tumours, hormonal therapy is helpful. It includes medroxyprogesterone acetate, GnRH agonists, aromatase inhibitors.<sup>15</sup> In earlier studies, oral medroxyprogesterone acetate was used.<sup>16</sup> In recent times, combination containing Doxorubicin is used.<sup>17</sup> Ifosfamide is helpful in chemoresistant sarcomas.<sup>18</sup> Tamoxifen, estrogens are contraindicated as they cause stimulative effect on disseminated endometrial stromal cells.<sup>19</sup> Dydrogestrone is hormonally active, non androgenic, synthetic steroid.<sup>20</sup> It lacks estrogenic, androgenic, glucocorticoid, mineralocorticoid properties. Dydrogestrone is preferred to other progestins due to lack of side effects.<sup>21</sup> Long term use of GnRH agonists can cause osteoporosis.<sup>22</sup> Anastrozole is the preferred aromatase inhibitor. They cause muscle pain, nausea, vomiting.<sup>23</sup> There is noncompliance of Letrozole while usage in breast cancer patients.<sup>24</sup> 5 year survival rate of patients with stage I and II is 90%, stage III and IV is 50%. Follow up is done once in 3 months for first year, half yearly for next 4 years, thereafter yearly follow up.<sup>25</sup>

**Conflict of Interest:** None.

## References

- D' Angeloe, Prat J. Uterine Sarcomas: A Review. *Gynaecological Oncol* 2010;116:131-9.
- Baiocchi G, Kavanagh JJ, Wharton JT. Endometrial Stromal sarcomas arising from ovarian and extraovarian endometriosis: report of two cases and review of literature. *Gynaecological Oncol* 1990;36:147-51.
- Oliva E. Cellular mesenchymal tumours of uterus: A review emphasizing recent Observations. *Int J Gynecol Pathol* 2014;33:374-384.
- Nucci Mr, Harburger D, Koontz J, Molecular analysis of jzfl1-jjaz1 gene fusion by rt pcr and fish in endometrial stromal neoplasms. *Am J Surg Pathol* 2007;31:65-70.
- Chang KI, Crabtree Gs, Lim Tan Sk. Primary uterine endometrial stromal neoplasms. A clinicopathologic study of 117 cases. *Am J Surg Pathol* 1990;14:415-38.
- Lee Ch, Marino-Enriquez A, Ou W. The clinicopathologic features of ywhae-fam22 endometrial stromal sarcomas: A histologically high-grade and clinically aggressive tumor. *Am J surgpathol* 2012;36:641-53
- Kurihara S, Oda Y, Ohishi Y. Endometrial stromal sarcomas and related high-grade Sarcomas: Immunohistochemical and molecular genetic study of 31 cases. *Am J Surg Pathol* 2008;32:1228-38
- Tanner EJ, Garg K, Leitao MM Jr. High grade undifferentiated uterine sarcoma: Surgery, treatment, and survival outcomes. *Gynecol Oncol* 2012;127:27-31.
- Mourra N, Turet E, Parc Y, de Saint-Maur P, Parc R, Flejou JF et al. Endometrial stromal sarcoma of the rectosigmoid colon arising inextragonadal endometriosis and revealed by portal vein thrombosis. *Arch Pathol Lab Med* 2001;125:1088-90.
- Kim L, Choi SJ, Park IS, Han JY, Kim JM, Chu YC et al. Endometrial stromal sarcoma of the small bowel. *Ann Diagn Pathol* 2008;12:128-33
- Koyama T, Togashi K, Konishi I, Kobayashi H, Ueda H, Kataoka ML et al. MR imaging of endometrial stromal sarcoma: correlation with pathologic findings. *AJR Am J Roentgenol* 1999;173:767-72.
- Kim L, Choi SJ, Park IS, Han JY, Kim JM, Chu YC et al. Endometrialstromal sarcoma of the small bowel, *Ann Diagn Pathol* 12(2008):28-133, <http://dx.doi.org/10.1016/j.anndiagpath.2006.03.020>.
- R.P. Masand, E.D. Euscher, M.T. Deavers, A. Malpica, Endometrioidstromalsarcoma: a clinicopathologic study of 63 cases, *Am. J. Surg. Pathol.* 37(2013)1635-1647.
- J.A. Rauh-Hain, M.G. del Carmen, Endometrial stromal sarcoma: a systematicreview, *Obstet Gynecol* 122(2013):676-83.
- Rizzo AG: Laparoscopic surgery in pregnancy: long-term follow-up. *J Laparoendosc adv surg Tech* 2003, 13:11-15.
- Mathevet P, Nessah K, Dargent D, Mellier G: Laparoscopic management of adnexal masses in pregnancy: a case series. *Eur J Obstet gynecol reprod Biol* 2003;108:217-22.
- Yuen PM, Ng PS, Leung PL, Rogers MS: Outcome in laparoscopic management of persistent adnexal mass during the second trimester of pregnancy. *Surg Endosc* 2004;18:1354-7.
- Ni Mhuireachtaigh R, O'Gorman DA: Anesthesia in pregnant women for non-obstetric surgery. *J Clin Anesth* 2006, 18:60-66.
- R.P. Masand, E.D. Euscher, M.T. Deavers, A. Malpica, Endometrioidstromalsarcoma: a clinicopathologic study of 63 cases, *Am J Surg Pathol* 37(2013)1635-47.
- A. Zemlyak, S. Hwang, E. Chalas, C.R.J. Pameijer, Primary extrauterineendometrial stromal cell sarcoma: a case and review, *J. Gastrointest. Cancer* 39(2008):104-106,
- J.A. Rauh-Hain, M.G. del Carmen, Endometrial stromal sarcoma: a systematicreview, *Obstet Gynecol* 122(2013):676-683,
- Thigpen JT, Brady MF, Alvarez RD, Adelson MD, Homesley HD, Manetta A et al. Oral medroxyprogesterone acetate in the treatment of advanced or recurrent endometrial carcinoma: a dose-response study by the Gynecologic Oncology Group. *J Clin Oncol* 1999;17:1736-44
- Goff BA, Rice LW, Fleischhacker D. Uterine leiomyosarcoma and endometrial stromal sarcoma: Lymph node metastases and sites of recurrence. *Gynecol Oncol* 1993;50:105-9.
- Sutton G, Blessing JA, Park R, disaia PJ, Rosenshein N. Ifosfamide treatment of recurrent or metastatic endometrial stromal sarcomas previously unexposed to chemotherapy: A study of the Gynecologic Oncology Group. *Obstetgynecol* 1996;87:747-50.
- Li N, Wu LY, Zhang HT, An JS, Li XG, Ma SK et al. Treatment options in stage I endometrial stromal sarcoma: a retrospective analysis of 53 cases. *Gynecol Oncol* 2008;108(2):306-11.
- Chu MC, Mor G, Lim C, Zheng W, Parkash V, Schwartz PE et al. Low-grade endometrial stromal sarcoma: hormonal aspects. *Gynecol Oncol* 2003;90(1):170-6.
- Reerink EH, Scholer HF, Westerhof P, Querido A, Kassenaar AA, Diczfalusy E et al. A new class of hormonally active steroids. *Nat* 1960;186:168-9.
- Schindler AE. Progestational effects of dydrogestrone in vitro, in vivo and on the human endometrium. *Maturitas* 2009;65Suppl 1:S3-11.
- Sugimoto AK, Hodsmann AB, Nisker JA. Long-term gonadotropin-releasing hormone agonist with standard

- postmenopausal estrogen replacement failed to prevent vertebral bone loss in premenopausal women. *Fertilsteril* 1993;60:672-4.
30. Paoletti AM, Serra GG, Cagnacci A, Vacca AM, Guerriero S, Solla E et al. Spontaneous reversibility of bone loss induced by gonadotropin- releasing hormone analog treatment. *Fertilsteril* 1996; 65:707-10.
31. Maluf FC, Sabbatini P, Schwartz L, Xia J, Aghajanian C. Endometrial stromal sarcoma: objective response to letrozole. *Gynecoloncol* 2001;82:384-8.
32. Fontein DB, Nortier JW, Liefers GJ, Putter H, Meershoek-Klein Kranenbarg E, van den Bosch J, et al. High non-compliance in the use of letrozole after 2.5 years of extended adjuvant endocrine therapy. Results from the IDEAL randomized trial. *Eur J surgoncol* 2012;38:110-7.
33. Fontein DB, Nortier JW, Liefers GJ, Putter H, Meershoek-Klein Kranenbarg E, van den Bosch J et al. High non-compliance in the use of letrozole after 2.5 years of extended adjuvant endocrine therapy. Results from the IDEAL randomized trial. *Eur J Surg Oncol* 2012;38:110-7.
34. Chan JK, Kavar NM, Shin JY. Endometrial stromal sarcoma: A population-based analysis. *Br J Cancer* 2008;99:1210-5.

**How to cite this article:** Geetha, Rathika R, Endometrial stromal sarcoma- A case report. *Indian J Obstet Gynecol Res* 2019;6(2):225-227.